



Wittgenstein Centre

FOR DEMOGRAPHY AND
GLOBAL HUMAN CAPITAL

The non-marital birth ratio on the increase: what is behind?

A comparison of trends in the Czech Republic, Poland and Slovakia, 1992-2010

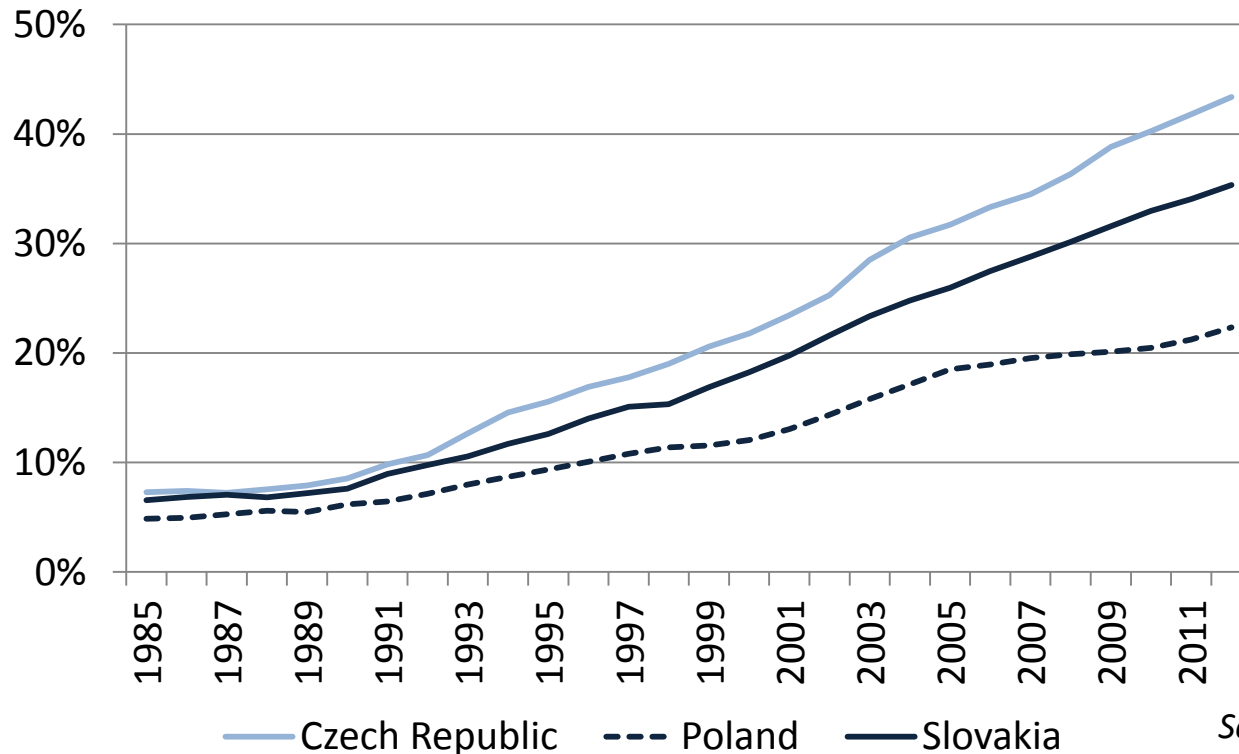
Zuzanna Brzozowska, Michaela Potančoková, Martina Štípková

FAMCHIP Conference, Warsaw, 18 December 2013



Motivation

- Throughout the socialist era, the non-marital birth ratio (NMBR) remained stable (5-6%) in all three countries (Kotowska et al. 2008, Potančoková 2008, Štípková 2013)
- Since late 1980's: it has been on the increase



Source: Eurostat

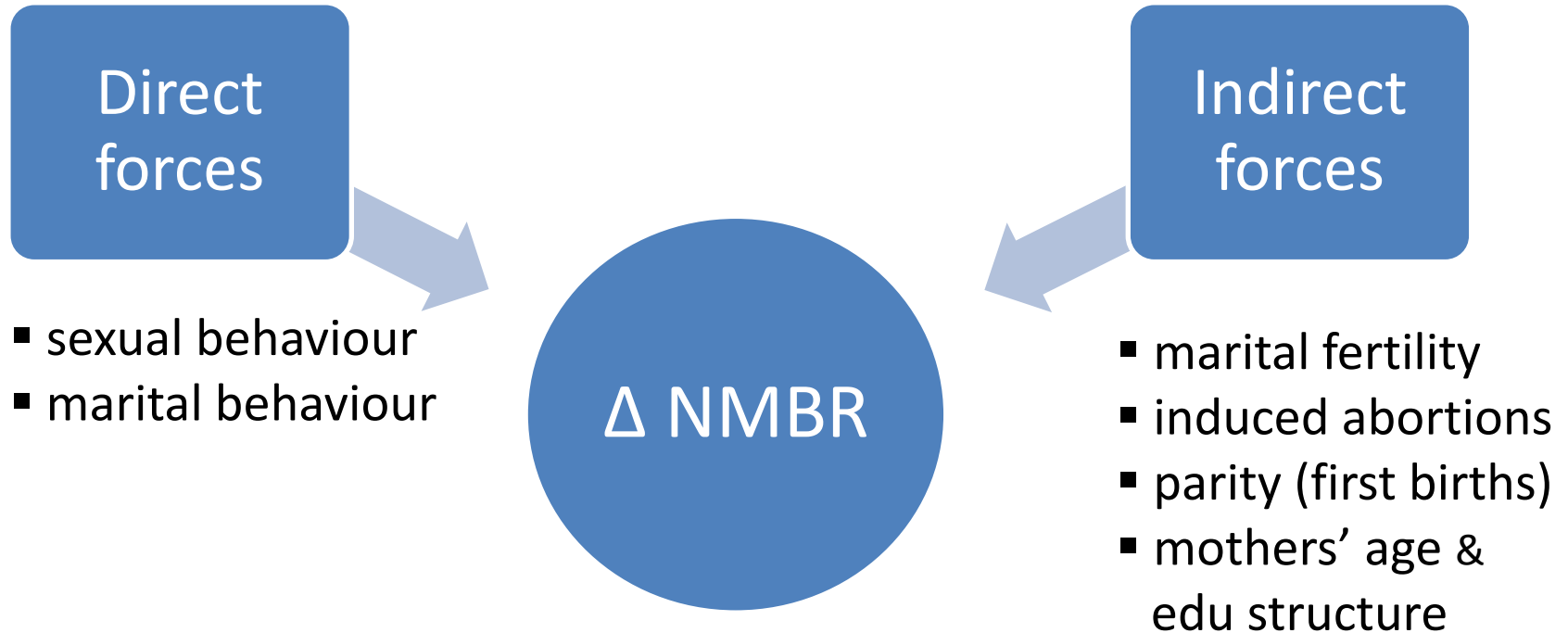


Motivation

- Extensive research on changes in union formation in Europe (Kiernan 2004, Kalmijn 2007, Perelli-Harris et al. 2010, 2012), also in post-socialist Europe (Hoem et al. 2009, Perelli-Harris & Gerber 2009)
- But there is still some space for further research...

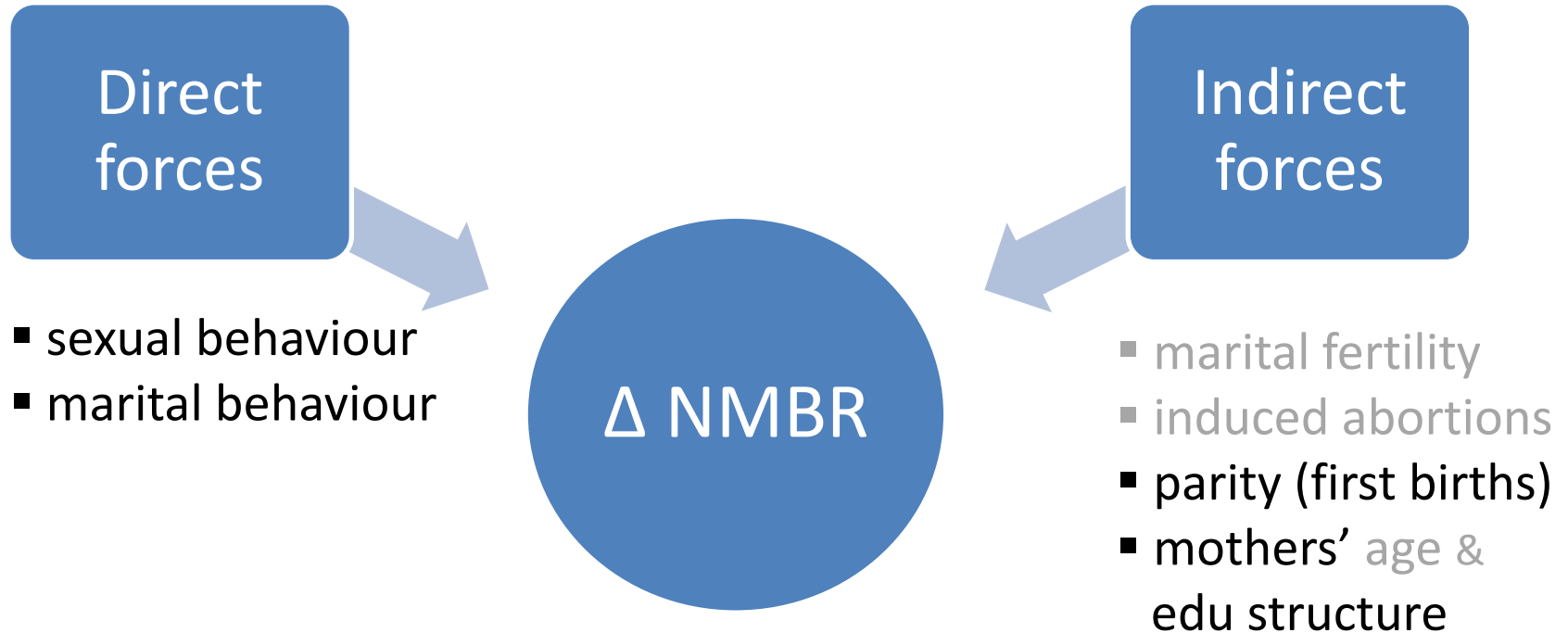


Forces behind





Forces behind



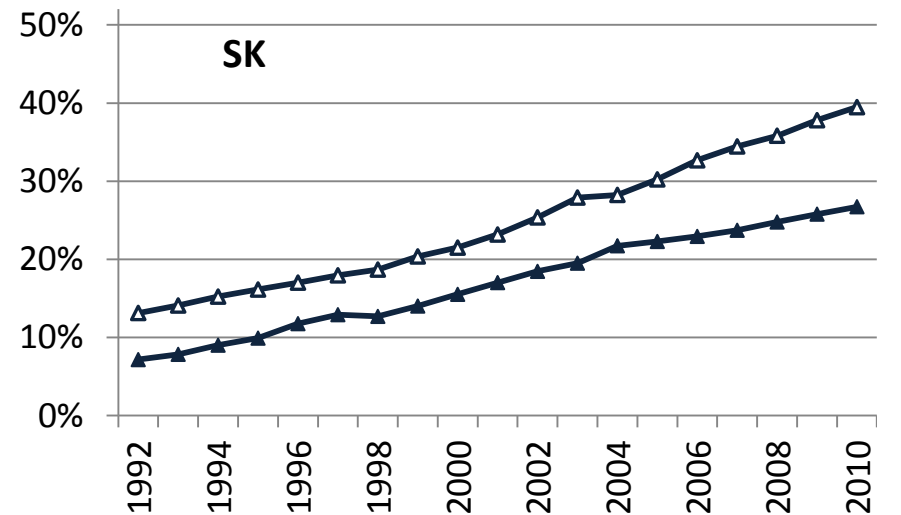
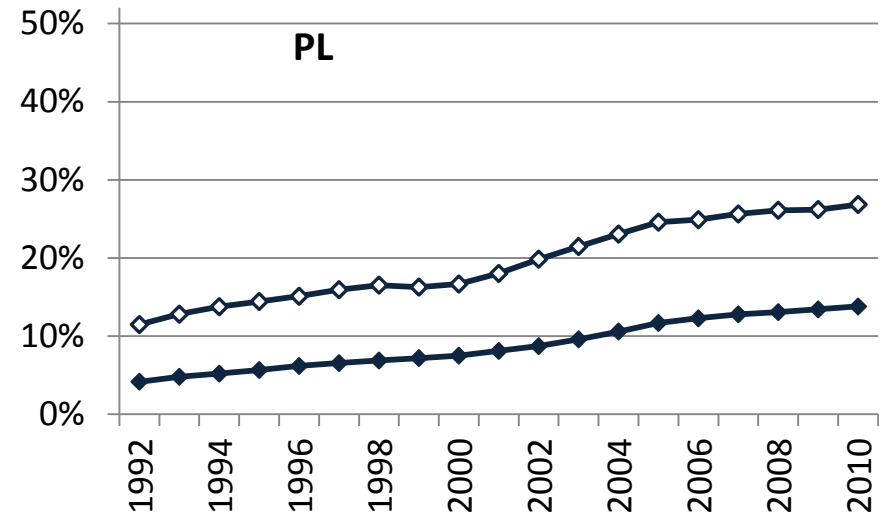
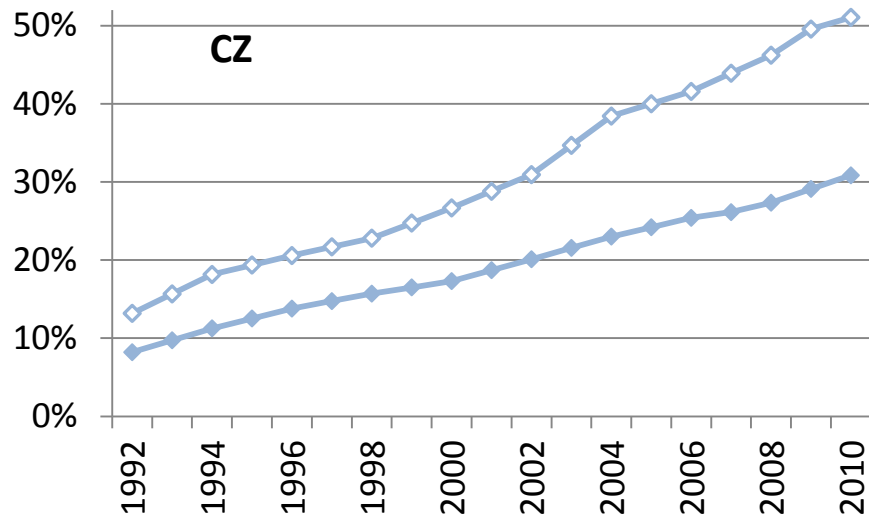


Wittgenstein Centre

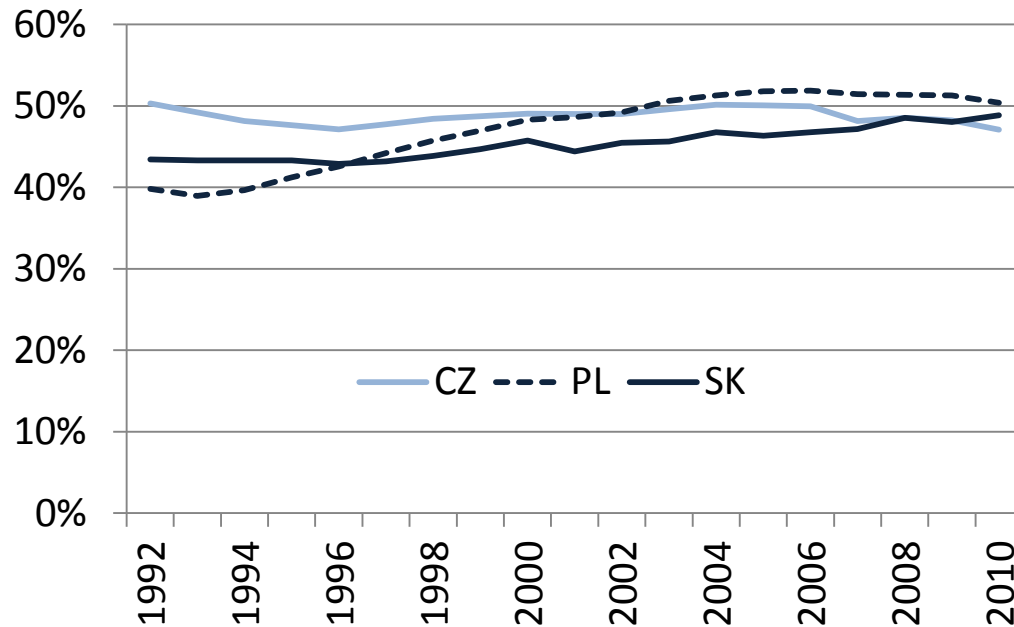
Indirect
forces

Indirect: proportion of first births

NMBR among first (empty markers) and second+ (coloured markers) births



Indirect: proportion of first births



Role of parity changes in Δ NMBR (1992-2010)

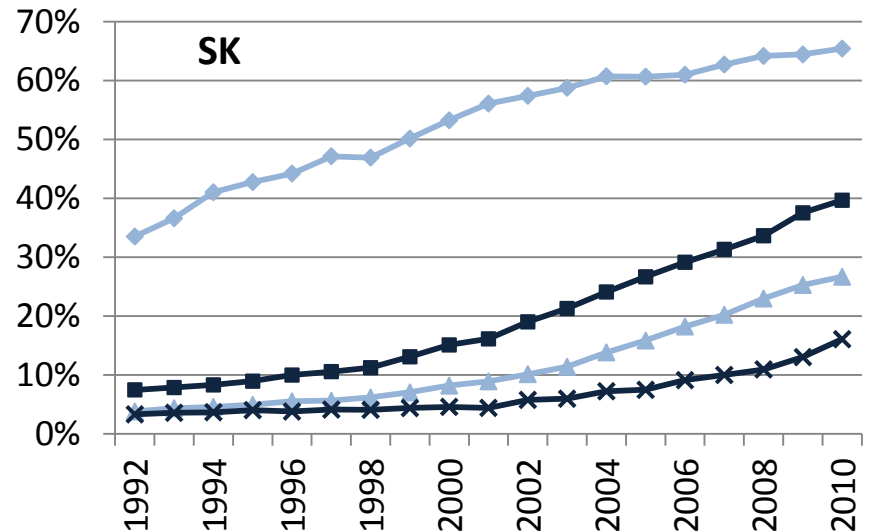
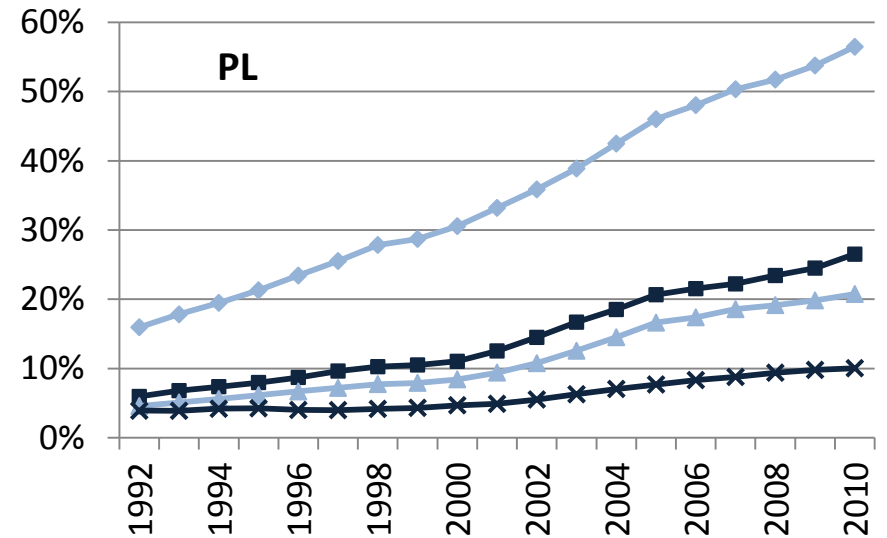
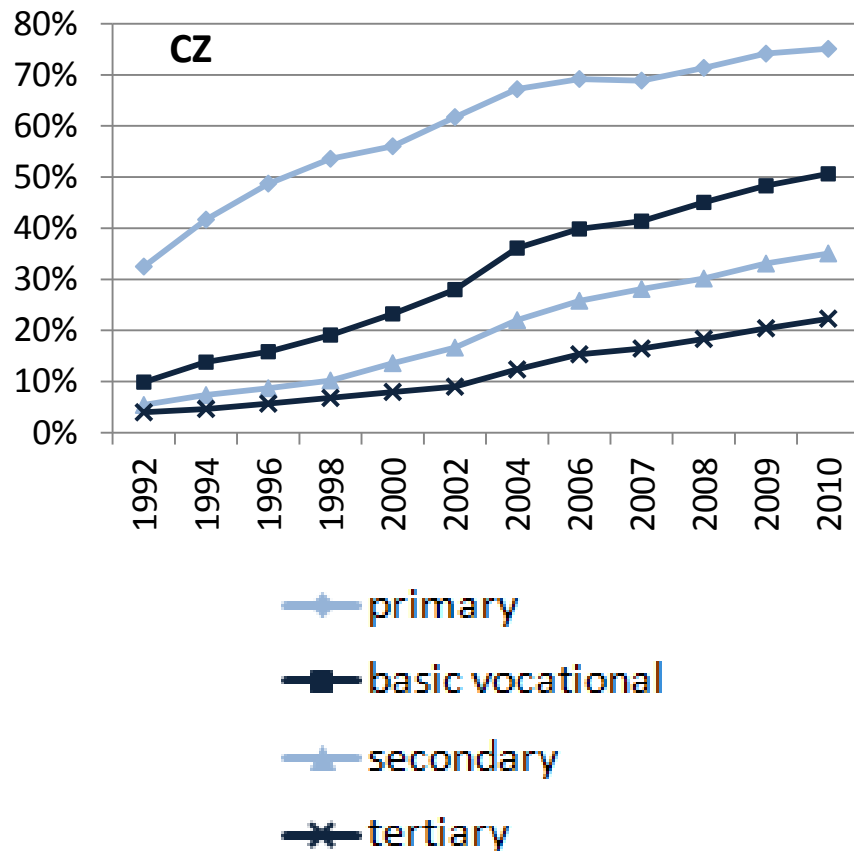
CZ	0.30	-1.5%
PL	0.13	8%
SK	0.23	2%

(Kitagawa, 1955)

-> The role of changes in the proportion of first births was minor.

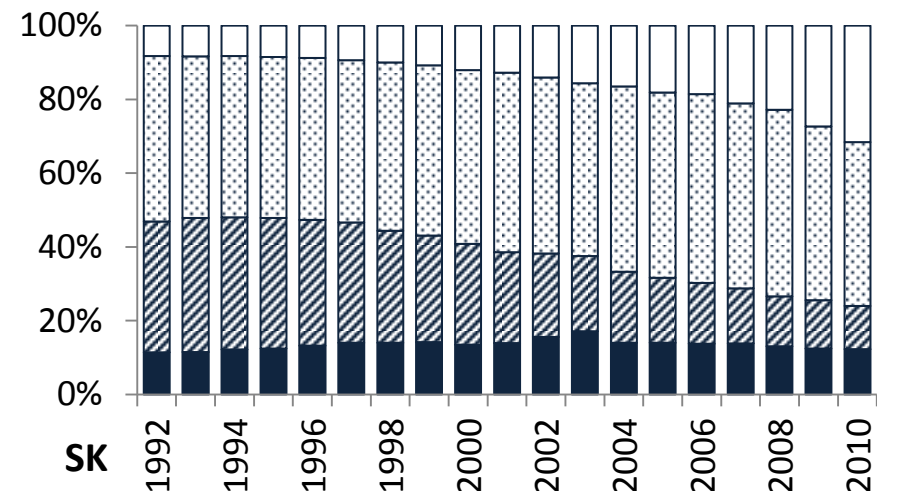
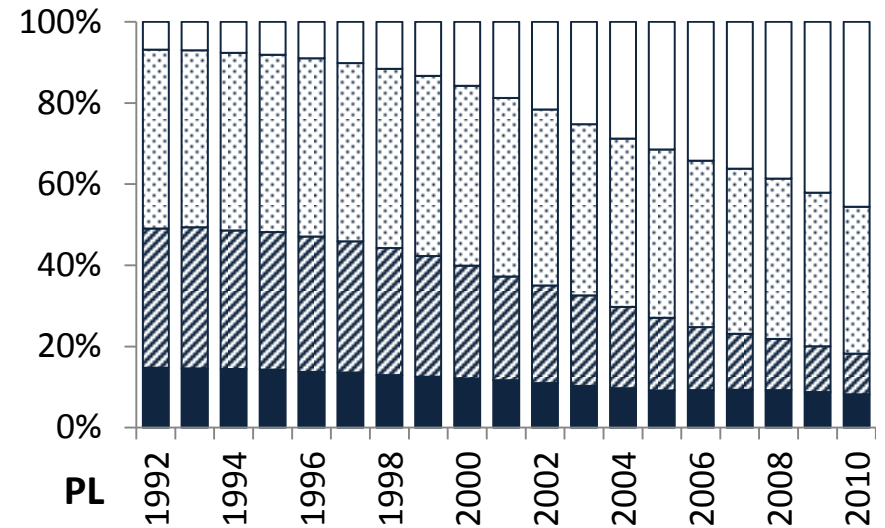
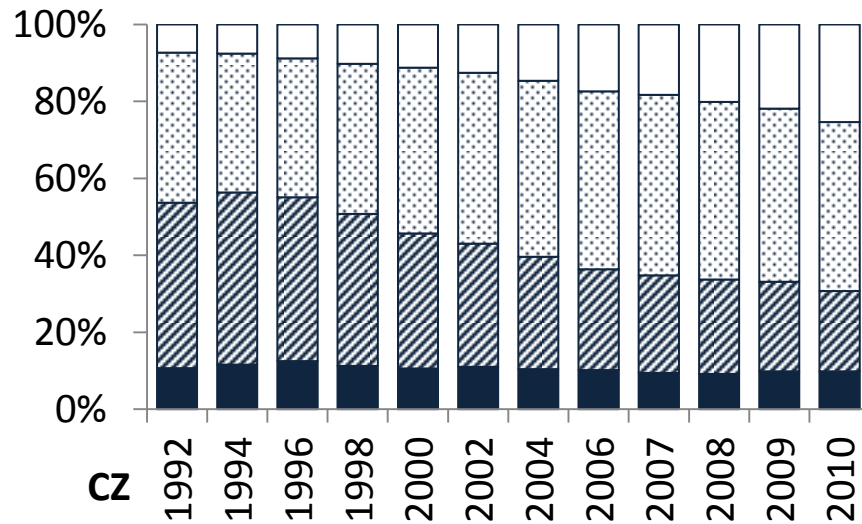
Indirect: mothers' educational structure

First-time mothers:
NMBR by education



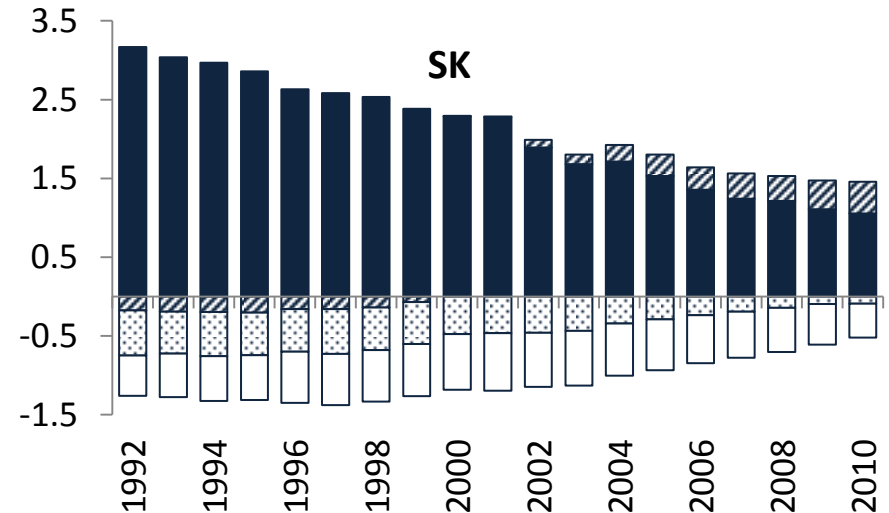
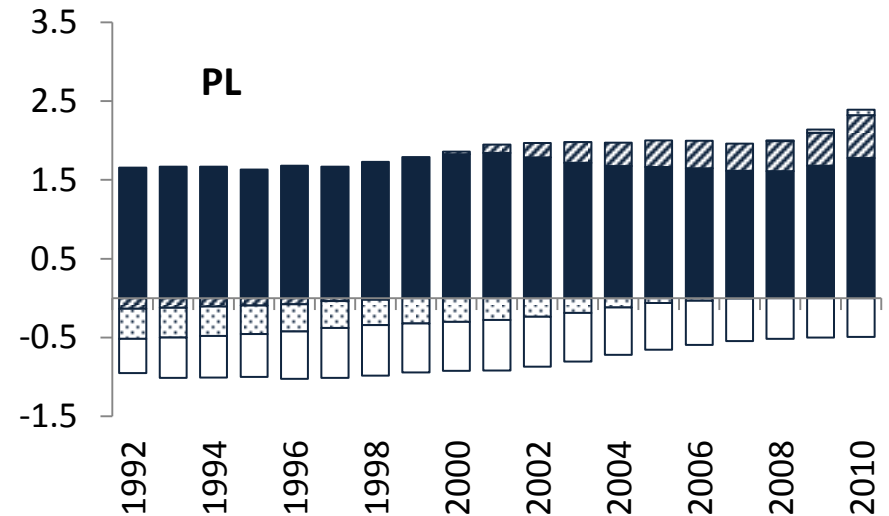
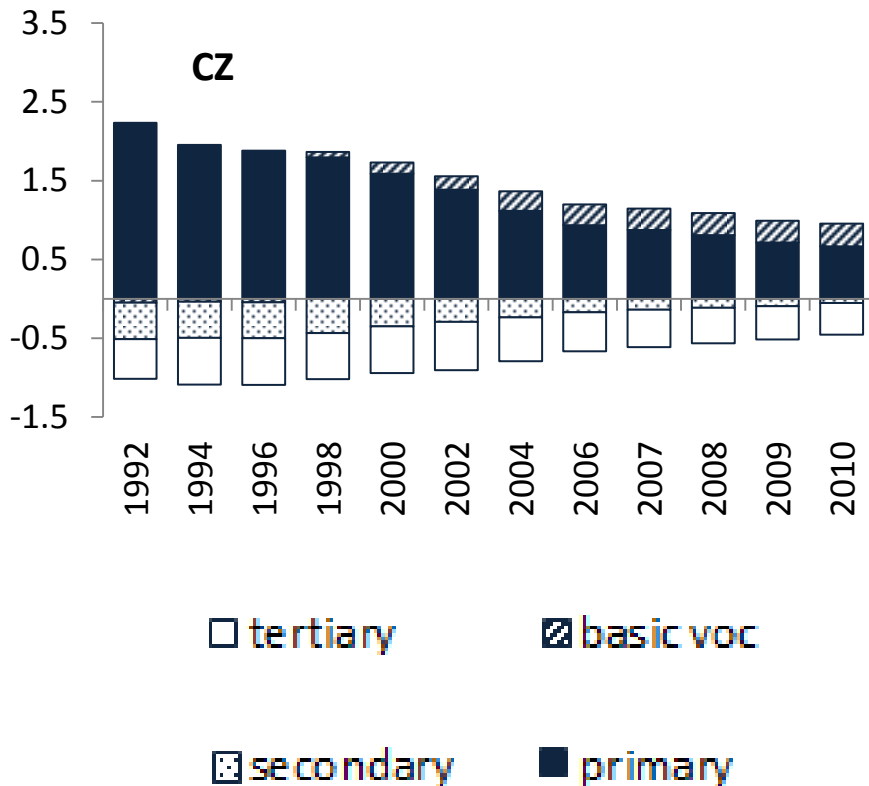
Indirect: mothers' educational structure

First-time mothers: educational structure



Indirect: mothers' educational structure

First-time mothers vs. first-time non-married mothers
(difference normalized)



Indirect: mothers' educational structure

Role of edu changes in Δ NMBR 1992-2010

	Δ NMBR	Structural effect of education
CZ	0.38	-12%
PL	0.15	-47%
SK	0.26	-15%

(Kitagawa, 1955; Cho & Retherford, 1973)

-> The role of changes in the educational structure was important in Poland, but minor in the Czech Republic and Slovakia



Wittgenstein Centre

Direct
forces

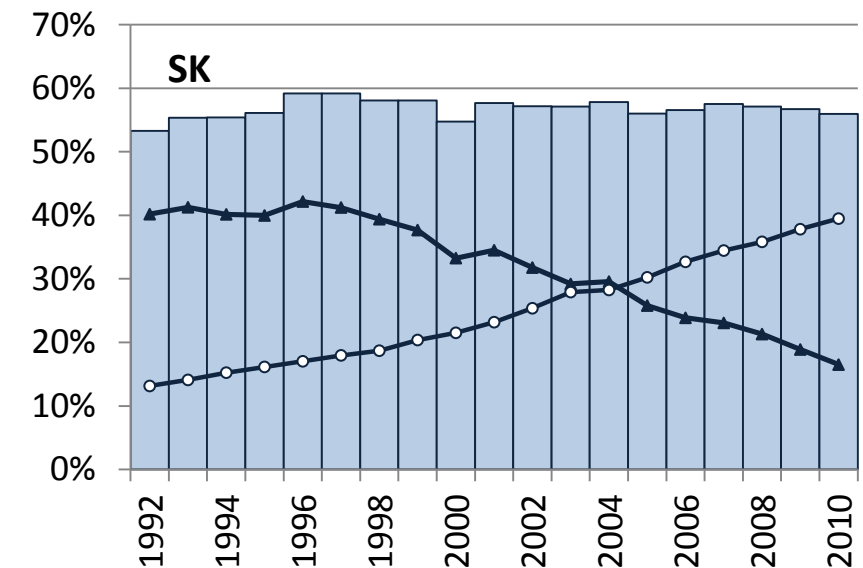
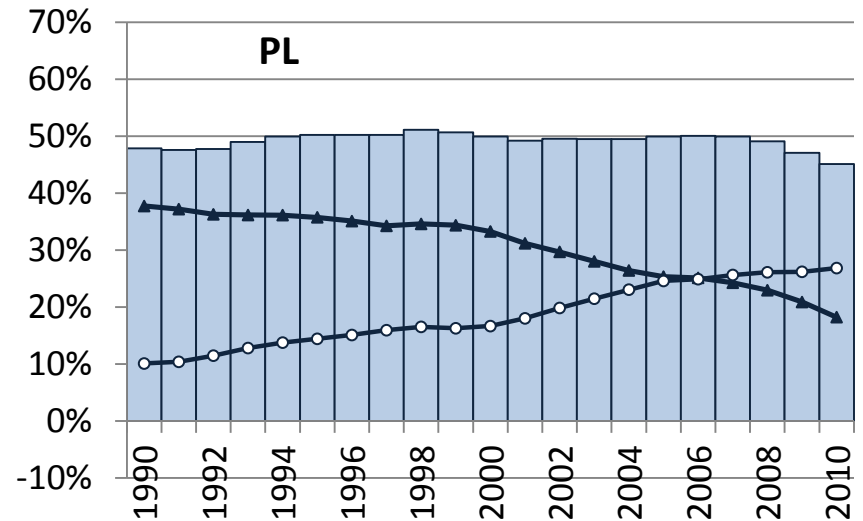
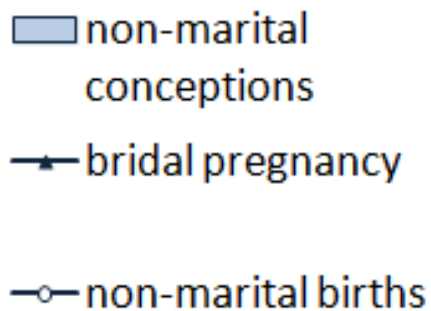
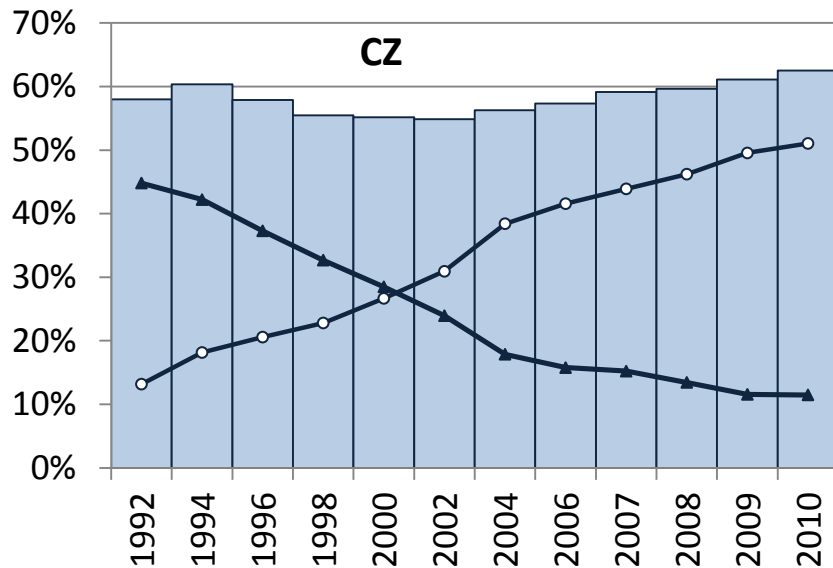
Direct: Sexual & marital behaviour

Sexual: the proportion of non-marital conceptions

Marital: the proportions of their outcomes:
non-marital birth vs. post-conception marriage

Direct: Sexual & marital behaviour

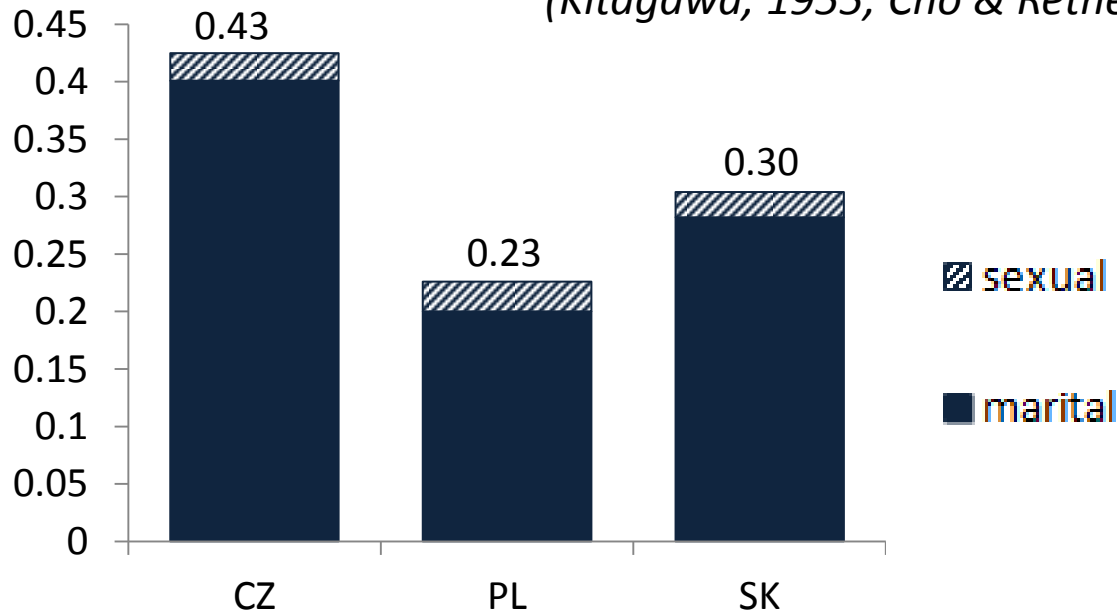
First-time mothers



Direct: Sexual & marital behaviour

Role of behavioural changes in Δ NMBR 1992-2010				
	Δ NMBR	Structural effect of education	Behavioural effect	Marital behaviour
CZ	0.38	-0.05 (-12%)	0.43	94%
PL	0.15	-0.07 (-47%)	0.23	88%
SK	0.26	-0.04 (-15%)	0.30	93%

(Kitagawa, 1955; Cho & Retherford, 1973, Akerlof et al., 1996)



Summary: Behind Δ NMBR...



Wittgenstein Centre

- Indirect forces: changes in
 - the proportion of 1st births: minor and of marginal role
 - educational structure: considerable in all countries, but important only in PL (-)
- Direct forces: changes in
 - Sexual behaviour: minor and of minor role (+)
 - Marital behaviour: extensive and of crucial importance (+)



Wittgenstein Centre

FOR DEMOGRAPHY AND
GLOBAL HUMAN CAPITAL

THANK YOU

zuzanna.brzozowska@oeaw.ac.at

This research was supported by the European Research Council under the European Union's Seventh Framework Programme (FP7/2007-2013) / ERC Grant agreement n° 284238 (EURREP).

www.eurrep.org

EURREP
FERTILITY AND REPRODUCTION
IN 21ST CENTURY EUROPE

